

m o o o i

# Pallana Light

IDEO



Practically playful! The Pallana Light by IDEO is a suspended lighting fixture that support you in the balancing act that is daily life. Pallana's mechanically joined classic shapes create a dynamic and adaptable design, making it a playful task light. Spin the ring lights to assist you when working, eating, cooking, helping your children with homework, or whatever occasion. Pallana Light is available in two muted colours to match any interior style and colour palette. The added softness of the matte textured rings and knitted fabric sets Pallana apart from traditional finish choices. With the dim-to-warm functionality, you can control the colour temperature and light intensity simultaneously! Pallana brings touch of exuberance to any room, while supporting your flow activities and moods throughout the day.

---

## *Detailing*



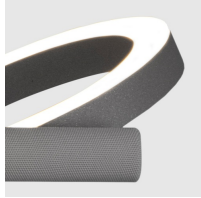
Eating, working, cooking. Whatever the occasion or space, Pallana is up to the task.

---

## *Colours*



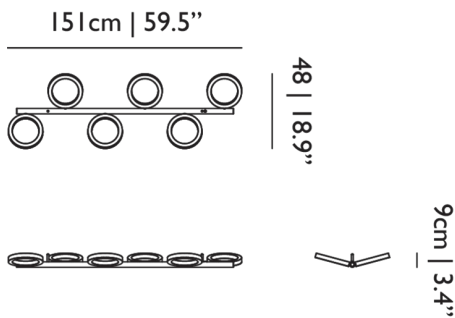
Pebble



Slate

## Pallana Light / Pallana Light 6

### Dimensions



### Product

**WIDTH** 151.5cm | 59.6"  
**HEIGHT** 9.5cm | 3.7"  
**DEPTH** 48.5cm | 19.1"  
**WEIGHT NETTO** 7.5kg | 16.53lbs

### Packaging

**WIDTH** 57cm | 22.4"  
**HEIGHT** 22cm | 8.7"  
**CUBAGE** 0.21m<sup>3</sup> | 7.31ft<sup>3</sup>  
**LENGTH** 165cm | 65"  
**WEIGHT** 11kg | 24.25lbs

### Technical UL / CE

#### MATERIAL

Metal tube with knitted fabric sleeve, powdercoated aluminium rings & plastic diffusers.

#### ENERGY LABEL

G

#### INSTALLATION REQUIRED

Yes

#### LIGHTSOURCE TYPE

LED

#### NUMBER OF LIGHTSOURCES

6

#### INPUT VOLTAGE

120-250V

#### FREQUENCY

50/60

#### MAX POWER CONSUMPTION

58W

#### LIFETIME

50000 hours

#### CABLE COLOUR

Transparent with tinned cores

#### CABLE LENGTH

1000cm | 393.7"; 250cm | 98.4"

#### SWITCH

No

#### CANOPY

Pebble III in matching colour

#### CHROM X

0.4358

#### CHROM Y

0.4014

**COLOUR TEMPERATURE**

3000 K

**LIGHT DIRECTION**

All directions

**R9**

71.1

**CRI**

93

**LIGHT OUTPUT**

3800 lm

**DIMMING & LIGHTING CONTROL**

DALI dt6, Push / Pulse dim on Line Voltage, Wireless Wall Switch, Mains / ELV dimming is not possible

*See last page for more information about the dimming possibilities.*



## *Dimming & Lighting Control*

### *DALI dt6*

The luminaire is dimmable by integrating it into a DALI network. This is an universal and professional standard in home automation systems with endless control possibilities and ease. We advise to hire a professional to integrate the luminaire into your DALI network.

Compatible models: Pallana Light 6 CCC, Pallana Light 6 UL, Pallana Light 6 CE

---

### *Push / Pulse dim on Line Voltage*

The luminaire is dimmable by using an external momentary switch or pushbutton switch. The switch is usually mounted on an existing wall socket. In some cases a Phase or Control wire needs to be added to your home's wiring. The switch should be suitable for use with line voltage and of the type 'normal off - momentary on'. The luminaire dims perfectly when the switch makes and holds contact. A short press switches between on and off.

Compatible models: Pallana Light 6 CCC, Pallana Light 6 UL, Pallana Light 6 CE

---

### *Wireless Wall Switch*

With our Wireless Wall Switch, you'll have full control over your Moooi lighting design with one touch. Our Wireless Wall Switch comprises two components, a wall switch and radio device to put in the canopy of your Moooi lighting design. The wall switch can be integrated in System 55 or Decora style wall switches. The Wireless Wall Switch communicates via Bluetooth with the radio device in the luminaires canopy. Within moments you can enjoy full and fluent dimming, all the way to dark.

Compatible models: Pallana Light 6 CCC, Pallana Light 6 UL, Pallana Light 6 CE

---

### *Mains / ELV dimming is not possible*

Mains and/or ELV dimming is not possible. The wireless wall switch is advised for dimming in this case.

Compatible models: Pallana Light 6 CCC, Pallana Light 6 UL, Pallana Light 6 CE

---