

Calathea Majestica Small

REFERENCE AP1520/10

DESCRIPTION

Rising from the dense and untamable tropical forests, the Calathea unfurls its leaves with a breathtaking grace that reflects life's quiet wonder. Its intricate patterns and gentle response to light—folding and opening in harmony with its surroundings serve as a profound reminder of the importance of staying connected to the world around us. This rhythm of adaptation and serenity teaches us to embrace transformation with elegance, trusting in the natural flow that guides us. The Calathea Collection is a celebration of nature's artistry and a reflection of its quiet wisdom, inviting us to find beauty in life's twists and turns, to move through each moment with poise, and to let the light lead us toward something extraordinary.

Finish shown here Metal PL | Glass 10

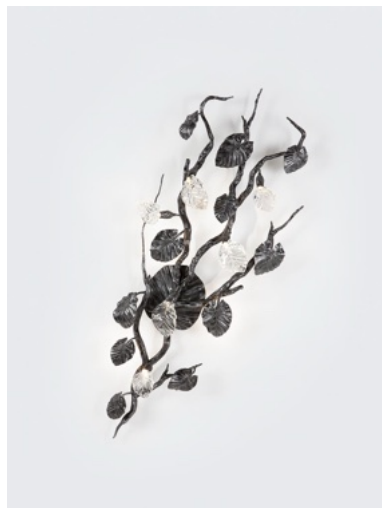
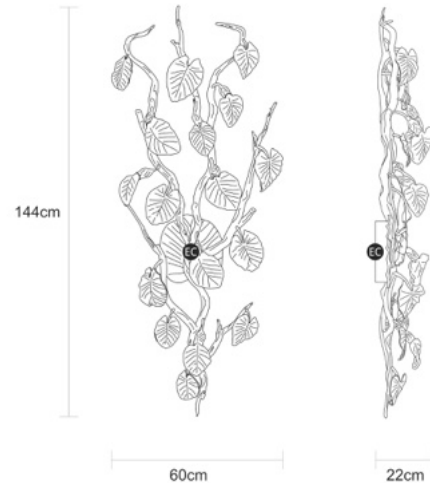
Designed and produced by hand in Portugal.

Serip reserves the right to make changes or improvements at any time it deems useful to guarantee the highest quality standards for its products.

Hand-finished, some variations may occur.

All the glass models are designed by Serip and exclusively handmade produced, establishing a unique and prestigious feature of the glass handwork art. For this reason, there is the possibility of variation in measures, weight, colour and shape represented.

TECHNICAL DRAWING



TECHNICAL SPECIFICATIONS

MEASUREMENTS

FIXTURE SIZE & WEIGHT

Width 60.00cm / 23.62in
Height 144.00cm / 56.69in
Depth 22.00cm / 8.66in
Weight 19.00kg / 41.80lb

PACKAGE SIZE & WEIGHT

(m)Package 1/2 75.00m x 50.00m x 160.00m
=0.60CBM

(in)Package 1/2 29.53in x 19.69in x 63.00in
=21.19ft³

ELECTRIC FEATURE

Installation Ceiling
IP degree IP20

220-240V 50Hz-60Hz
Max Power Consumption 18W
Light Sources
10 x LED module

Included Sources

Light Sources
10 x LED module
Lumens 1920lm
Kelvin 3000
CRI 90
Dimming system DALI

Optional Sources

Light Sources
10 x LED module
Lumens 1800lm
Kelvin 2700
CRI 80
Dimming system DALI

110-120V 50Hz-60Hz
Max Power Consumption 18W
Light Sources
10 x LED module

Included Sources

Light Sources
10 x LED module
Lumens 1800lm
Kelvin 2700
CRI 80
Dimming system DALI

Optional Sources

Light Sources
10 x LED module
Lumens 1920lm
Kelvin 3000
CRI 90
Dimming system DALI

ENERGY RATING

This luminaire allows lights sources with energy efficiency class



SERIP

CERTIFICATIONS



CARE INSTRUCTIONS

Due to the nature of our exquisite hand applied finishes, wipe clean with a soft, dry cloth or static duster must be used to clean the fixture.

Always avoid the use of harsh chemicals or abrasive cleaners as they may cause damage to the fixture's finish.

Cleaning is limited to the outer surfaces, shades or glass. It is important to ensure that no moisture enters the terminal compartment or reaches any live parts.

As our products are subject to technical modifications, we cannot guarantee, that all information is always up to date. Please contact our [technical department](#) with any queries.

SERIP

OPTIONAL FINISHES

METAL FINISHES



Talha (TA)

Silver/White
Patina
(FP/PB)

Silver (FP)

Rose Gold
(RO)

Palladium
(PL)

Lead (CH)

Gold/White
Patina
(FO/PB)

Gold (FO)



Copper (CO)

Black (PR)

GLASS FINISHES



Clear (10)

SERIP

Calathea Majestica Medium

REFERENCE AP1520/14

DESCRIPTION

Rising from the dense and untamable tropical forests, the Calathea unfurls its leaves with a breathtaking grace that reflects life's quiet wonder. Its intricate patterns and gentle response to light—folding and opening in harmony with its surroundings serve as a profound reminder of the importance of staying connected to the world around us. This rhythm of adaptation and serenity teaches us to embrace transformation with elegance, trusting in the natural flow that guides us. The Calathea Collection is a celebration of nature's artistry and a reflection of its quiet wisdom, inviting us to find beauty in life's twists and turns, to move through each moment with poise, and to let the light lead us toward something extraordinary.

Finish shown here Metal CH | Glass 10

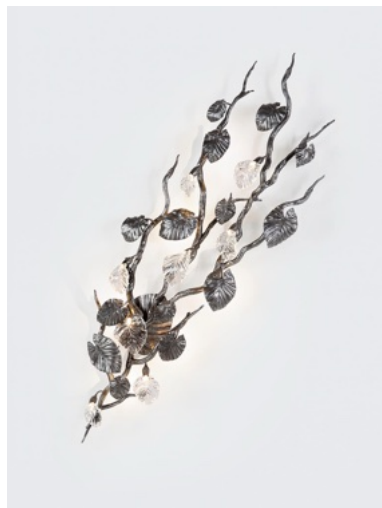
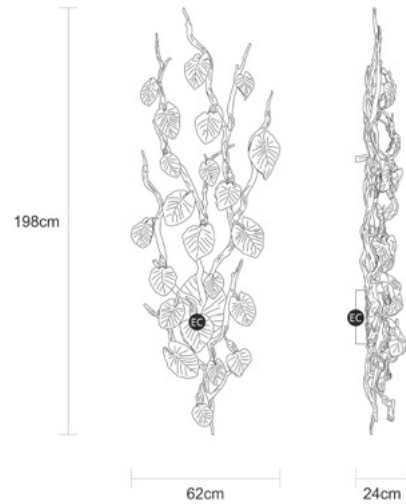
Designed and produced by hand in Portugal.

Serip reserves the right to make changes or improvements at any time it deems useful to guarantee the highest quality standards for its products.

Hand-finished, some variations may occur.

All the glass models are designed by Serip and exclusively handmade produced, establishing a unique and prestigious feature of the glass handwork art. For this reason, there is the possibility of variation in measures, weight, colour and shape represented.

TECHNICAL DRAWING



TECHNICAL SPECIFICATIONS

MEASUREMENTS

FIXTURE SIZE & WEIGHT

Width 62.00cm / 24.20in
Height 198.00cm / 77.20in
Depth 24.00cm / 9.40in
Weight 31.00kg / 68.20lb

PACKAGE SIZE & WEIGHT

(m)Package 1/2 75.00m x 50.00m x 210.00m
=0.79CBM

(in)Package 1/2 29.53in x 19.69in x 82.69in
=27.90ft³

ELECTRIC FEATURE

Installation Ceiling
IP degree IP20

220-240V 50Hz-60Hz
Max Power Consumption 24W
Light Sources
14 x LED module

Included Sources

Light Sources
14 x LED module
Lumens 2688lm
Kelvin 3000
CRI 90
Dimming system DALI

Optional Sources

Light Sources
14 x LED module
Lumens 2520lm
Kelvin 2700
CRI 80
Dimming system DALI

110-120V 50Hz-60Hz
Max Power Consumption 24W
Light Sources
14 x LED module

Included Sources

Light Sources
14 x LED module
Lumens 2520lm
Kelvin 2700
CRI 80
Dimming system DALI

Optional Sources

Light Sources
14 x LED module
Lumens 2688lm
Kelvin 3000
CRI 90
Dimming system DALI

ENERGY RATING

This luminaire allows lights sources with energy efficiency class



SERIP

CERTIFICATIONS



CARE INSTRUCTIONS

Due to the nature of our exquisite hand applied finishes, wipe clean with a soft, dry cloth or static duster must be used to clean the fixture.

Always avoid the use of harsh chemicals or abrasive cleaners as they may cause damage to the fixture's finish.

Cleaning is limited to the outer surfaces, shades or glass. It is important to ensure that no moisture enters the terminal compartment or reaches any live parts.

As our products are subject to technical modifications, we cannot guarantee, that all information is always up to date. Please contact our [technical department](#) with any queries.

SERIP

OPTIONAL FINISHES

METAL FINISHES



Talha (TA)

Silver/White
Patina
(FP/PB)

Silver (FP)

Rose Gold
(RO)

Palladium
(PL)

Lead (CH)

Gold/White
Patina
(FO/PB)

Gold (FO)



Copper (CO)

Black (PR)

GLASS FINISHES



Clear (10)

SERIP

Calathea Majestica Large

REFERENCE AP1520/27

DESCRIPTION

Rising from the dense and untamable tropical forests, the Calathea unfurls its leaves with a breathtaking grace that reflects life's quiet wonder. Its intricate patterns and gentle response to light—folding and opening in harmony with its surroundings serve as a profound reminder of the importance of staying connected to the world around us. This rhythm of adaptation and serenity teaches us to embrace transformation with elegance, trusting in the natural flow that guides us. The Calathea Collection is a celebration of nature's artistry and a reflection of its quiet wisdom, inviting us to find beauty in life's twists and turns, to move through each moment with poise, and to let the light lead us toward something extraordinary.

Finish shown here Metal FO | Glass 10

Designed and produced by hand in Portugal.

Serip reserves the right to make changes or improvements at any time it deems useful to guarantee the highest quality standards for its products.

Hand-finished, some variations may occur.

All the glass models are designed by Serip and exclusively handmade produced, establishing a unique and prestigious feature of the glass handwork art. For this reason, there is the possibility of variation in measures, weight, colour and shape represented.

TECHNICAL DRAWING



TECHNICAL SPECIFICATIONS

MEASUREMENTS

FIXTURE SIZE & WEIGHT

Width 165.00cm / 64.40in
Height 264.00cm / 103.00in
Depth 26.00cm / 10.10in
Weight 57.00kg / 125.40lb

PACKAGE SIZE & WEIGHT

(m)Package 1/2 1.25m x 0.77m x 2.20m
=2.12CBM
(in)Package 1/2 49.20in x 30.30in x 86.60in
=74.80ft³
Weight 1/2 165.00kg / 364.00lb (aprox.)

ELECTRIC FEATURE

Installation Ceiling
IP degree IP20

220-240V 50Hz-60Hz
Max Power Consumption 44W
Light Sources
27 x LED module

Included Sources

Light Sources
27 x LED module
Lumens 5184lm
Kelvin 3000
CRI 90
Dimming system DALI

Optional Sources

Light Sources
27 x LED module
Lumens 4860lm
Kelvin 2700
CRI 80
Dimming system DALI

110-120V 50Hz-60Hz
Max Power Consumption 44W
Light Sources
27 x LED module

Included Sources

Light Sources
27 x LED module
Lumens 4860lm
Kelvin 2700
CRI 80
Dimming system DALI

Optional Sources

Light Sources
27 x LED module
Lumens 5184lm
Kelvin 3000
CRI 90
Dimming system DALI

ENERGY RATING

This luminaire allows lights sources with energy efficiency class



SERIP

CERTIFICATIONS



CARE INSTRUCTIONS

Due to the nature of our exquisite hand applied finishes, wipe clean with a soft, dry cloth or static duster must be used to clean the fixture.

Always avoid the use of harsh chemicals or abrasive cleaners as they may cause damage to the fixture's finish.

Cleaning is limited to the outer surfaces, shades or glass. It is important to ensure that no moisture enters the terminal compartment or reaches any live parts.

As our products are subject to technical modifications, we cannot guarantee, that all information is always up to date. Please contact our [technical department](#) with any queries.

SERIP

OPTIONAL FINISHES

METAL FINISHES



Talha (TA)

Silver/White
Patina
(FP/PB)

Silver (FP)

Rose Gold
(RO)

Palladium
(PL)

Lead (CH)

Gold/White
Patina
(FO/PB)

Gold (FO)



Copper (CO)

Black (PR)

GLASS FINISHES



Clear (10)

SERIP