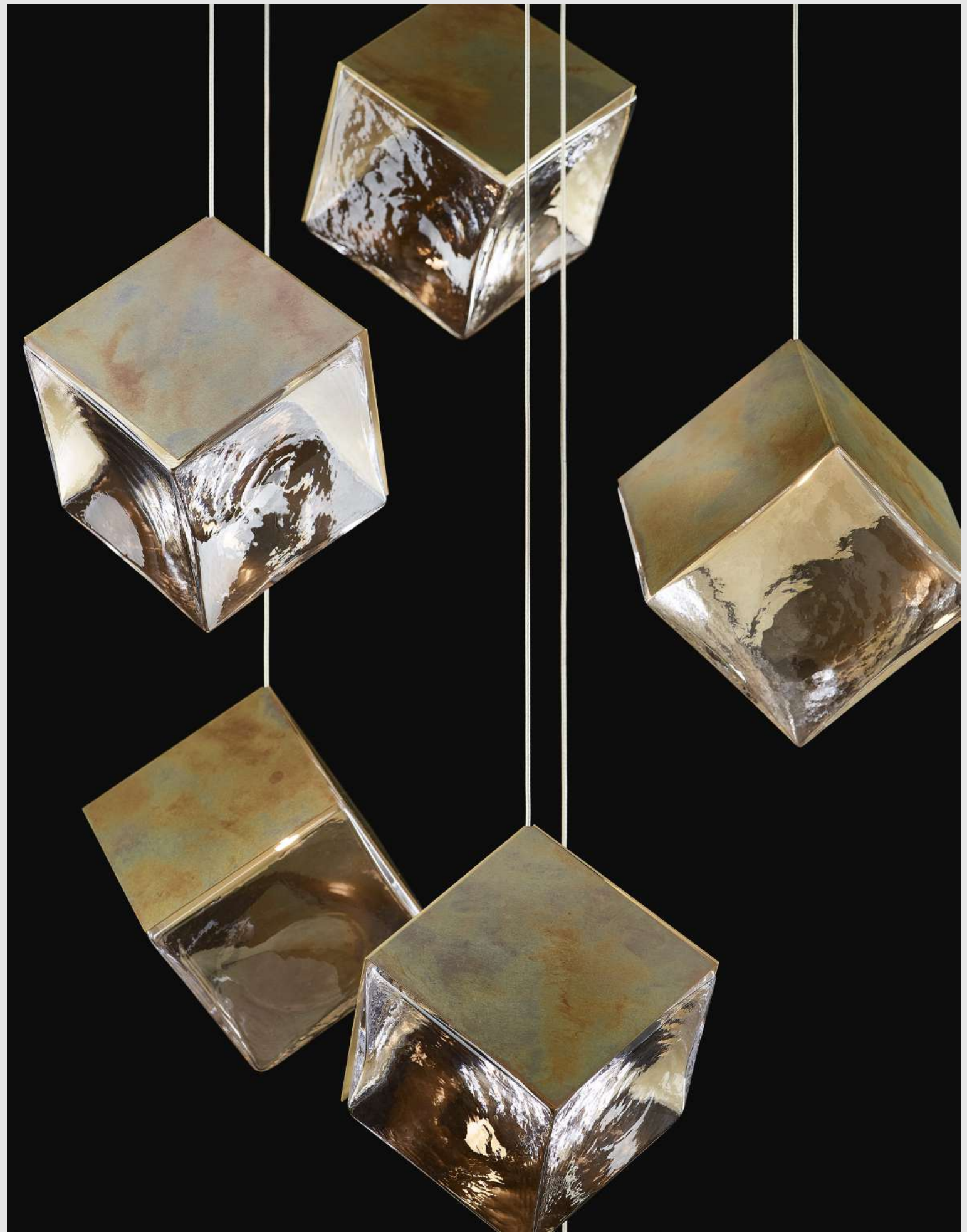


A modern lighting fixture consisting of five square glass shades hanging from thin black cords. The shades are made of clear glass with a textured, rippled surface and a gold-colored interior. They are arranged in a circular pattern around a central point. The background is a plain, light-colored wall.

**Pyrite loommo**



Pyrite bomma



Pyrite bomma





Pyrite bomma

# Pyrite Inspiration

The fiery stone from the core of the Earth

This BOMMA collection was inspired by pyrite, the golden fire-stone in the shape of a perfect cube, while the silver version of the shade reflects its inspiration in salt crystals. By blowing a molten organic substance into a precise cold form, the skilled hands of our glassmakers create a unique light fixture of elemental, yet perfect shape. The gleaming surface of this hand-blown crystal cube is enclosed from three sides by a polished metal component in either silver or gold tones.

Design by Dechem Studio



Pyrite bomma



Pyrite bomma



Pyrite bomma

# Pyrite Production



Pyrite bomma



Pyrite bomma



Pyrite bomma

# Pyrite Projects

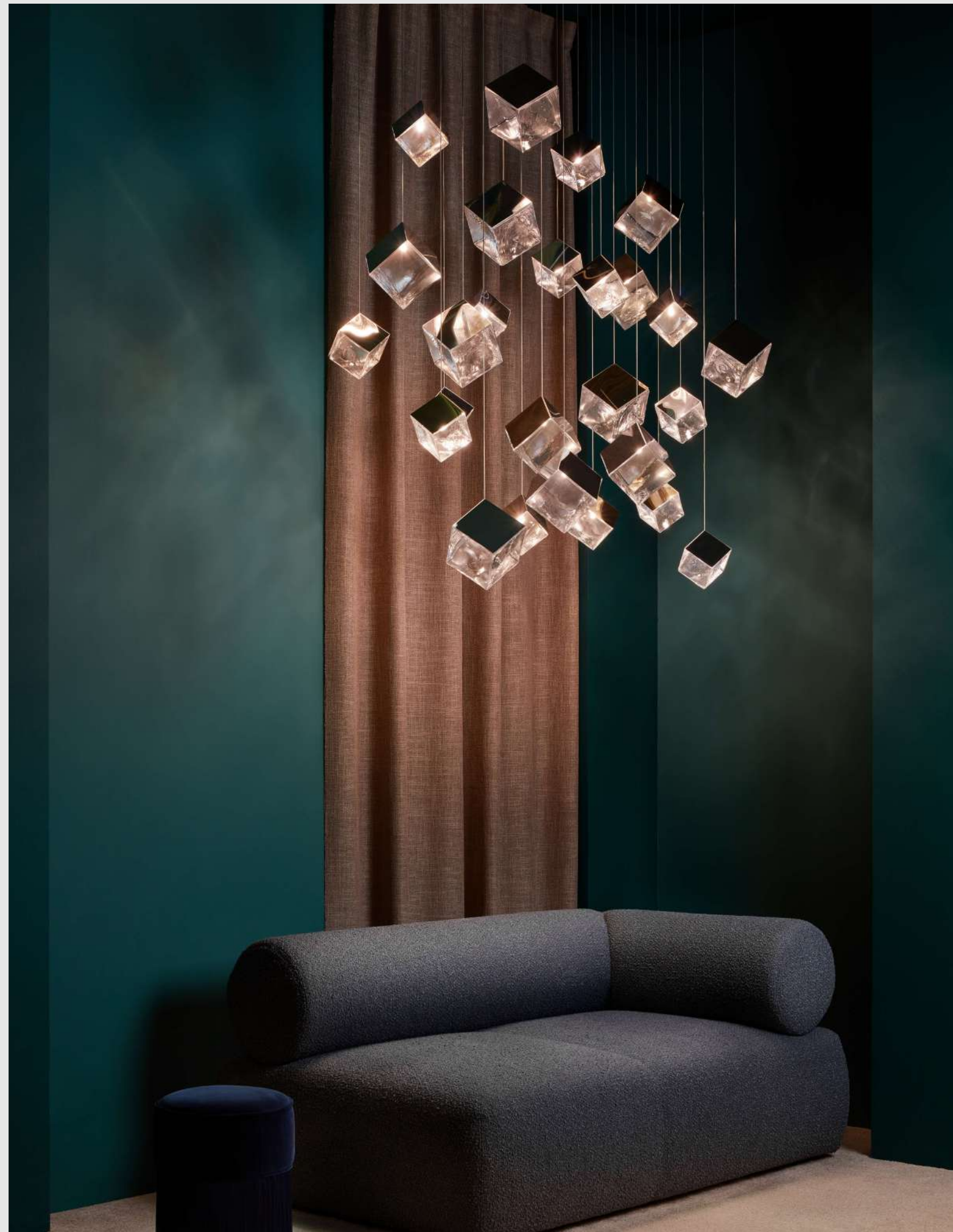


Pyrite bomma

Installation of 81 pcs of small and large Pyrite

Euroluce 2025, Italy, Milan, Interior by Studio Salaris and Václav Mlynář







Pyrite bomma Interior by Studio Salaris





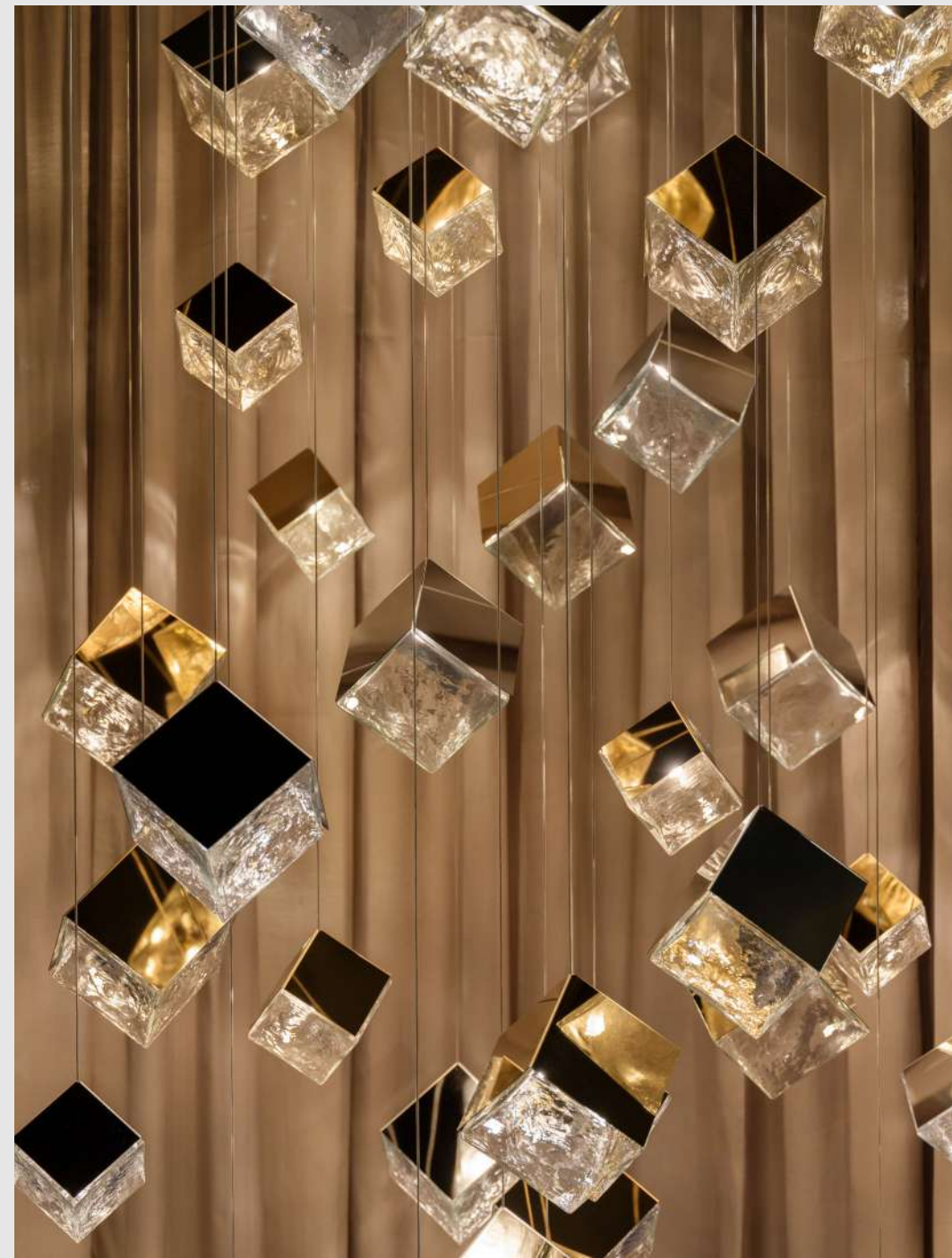


Pyrite bomma

Installation of 98 pcs Pyrite

Installation of 27 pcs Pyrite







Pyrite bomma

Installation of 36 pcs Pyrite

BOMMA catalogue, 2021

# Pyrite Options

Options

# Pendant Large

Glass options clear

Fitting options

silver / gold / patina gold / deopale brass



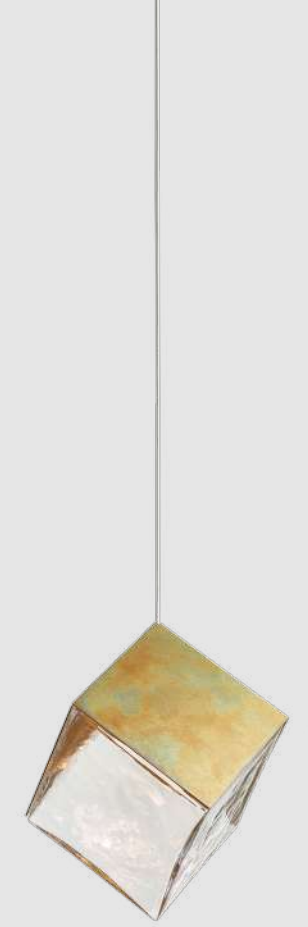
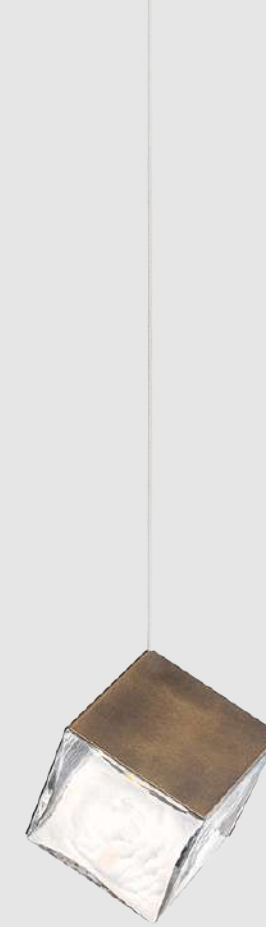
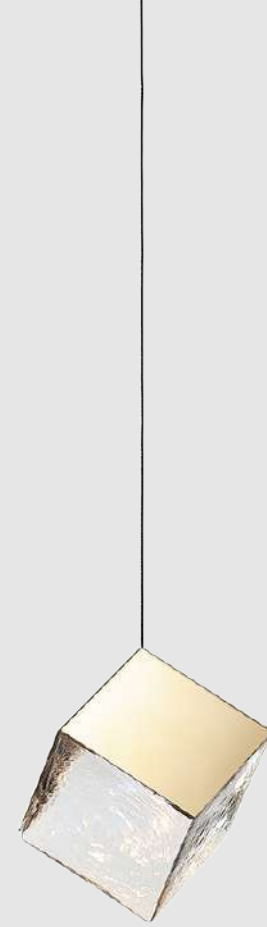
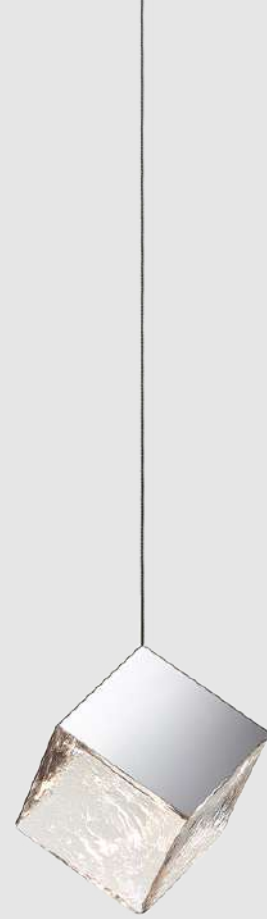
Options

# Pendant Small

Glass options clear

Fitting options

silver / gold / patina gold / deopale brass



# Pyrite Technical Information

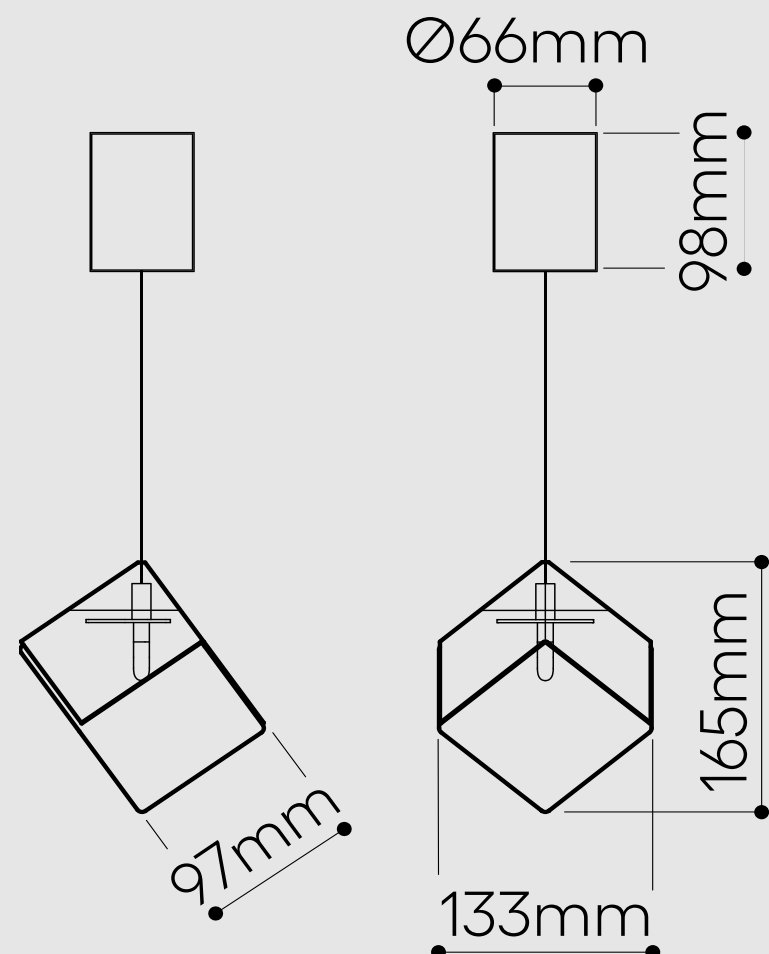
# PYRITE

## small pendant

Design by  
Studio Dechem

### Handmade glass attributes

All Bomma products are hand-made from mouth-blown lead-free crystal. Therefore any small bubbles, non-melts and irregularities in the glass are both proof and a characteristic feature of this traditional craft.



Pyrite bomma

### LIGHTING DESCRIPTION

Size	133 × 153 × 165 mm 5,2 × 6 × 6,5 inch
Cable	transparent 2,5 m / 98,4 inch
Weight	+/- 0,8 kg / 1,76 lbs
Glass	mouth-blown lead-free crystal in clear
Mounting + Metal sheet top	silver (polished stainless steel), gold (polished stainless steel with nitride tittan coating), deopale brass (manually oxidated brushed brass), patina gold (stainless steel + lacquered patina )
Protection	IP 20
Nominal voltage	12 V DC, 50 / 60 hz
Class	III. EU / II. USA

### LIGHT SOURCE

Type	G4, 1,2 W LED, 100 lm
Base	G4 (EU) / G4 (USA)
Voltage	12 V DC
Temperature	2700 K
Color index	RA 90+
Dimming	EU/Other versions - dimmable in constellations, non dimmable as a single pendant. UL/The Americas - dimmable in constellations and as a single pendant.

### PACKAGING

Material	Cardboard
Size	180 × 180 × 200 mm 7 × 7 × 7,9 inch

Origin: traditionally produced in the Czech Republic  
Intellectual property license holder: Bomma Czech Republic (EU)  
Represented by BMRC group s.r.o.

CERTIFICATES



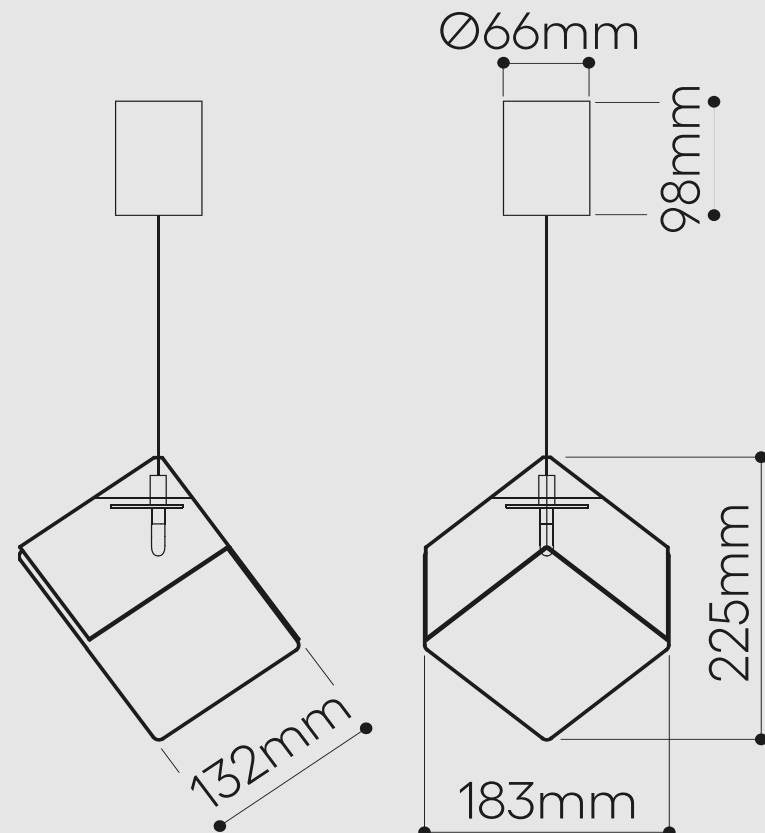
# PYRITE

## large pendant

Design by  
Studio Dechem

### Handmade glass attributes

All Bomma products are hand-made from mouth-blown lead-free crystal. Therefore any small bubbles, non-melts and irregularities in the glass are both proof and a characteristic feature of this traditional craft.



Pyrite bomma

### LIGHTING DESCRIPTION

Size	183 × 209 × 225 mm 7,2 × 8,2 × 8,9 inch
Cable	transparent 2,5 m / 98,4 inch
Weight	+/- 1,9 kg / 4,2 lbs
Glass	mouth-blown lead-free crystal in clear
Mounting + Metal sheet top	silver (polished stainless steel), gold (polished stainless steel with nitride tittan coating), deopale brass (manually oxidated brushed brass), patina gold (stainless steel + lacquered patina )
Protection	IP 20
Nominal voltage	12 V DC, 50 / 60 hz
Class	III. EU / II. USA

### LIGHT SOURCE

Type	G4, 1,2 W LED, 100 lm
Base	G4 (EU) / G4 (USA)
Voltage	12 V DC
Temperature	2700 K
Color index	RA 90+
Dimming	EU/Other versions - dimmable in constellations, non dimmable as a single pendant. UL/The Americas - dimmable in constellations and as a single pendant.

### PACKAGING

Material	Cardboard
Size	220 × 220 × 250 mm 8,6 × 8,6 × 9,8 inch

Origin: traditionally produced in the Czech Republic  
Intellectual property license holder: Bomma Czech Republic (EU)  
Represented by BMRC group s.r.o.

CERTIFICATES



step beyond